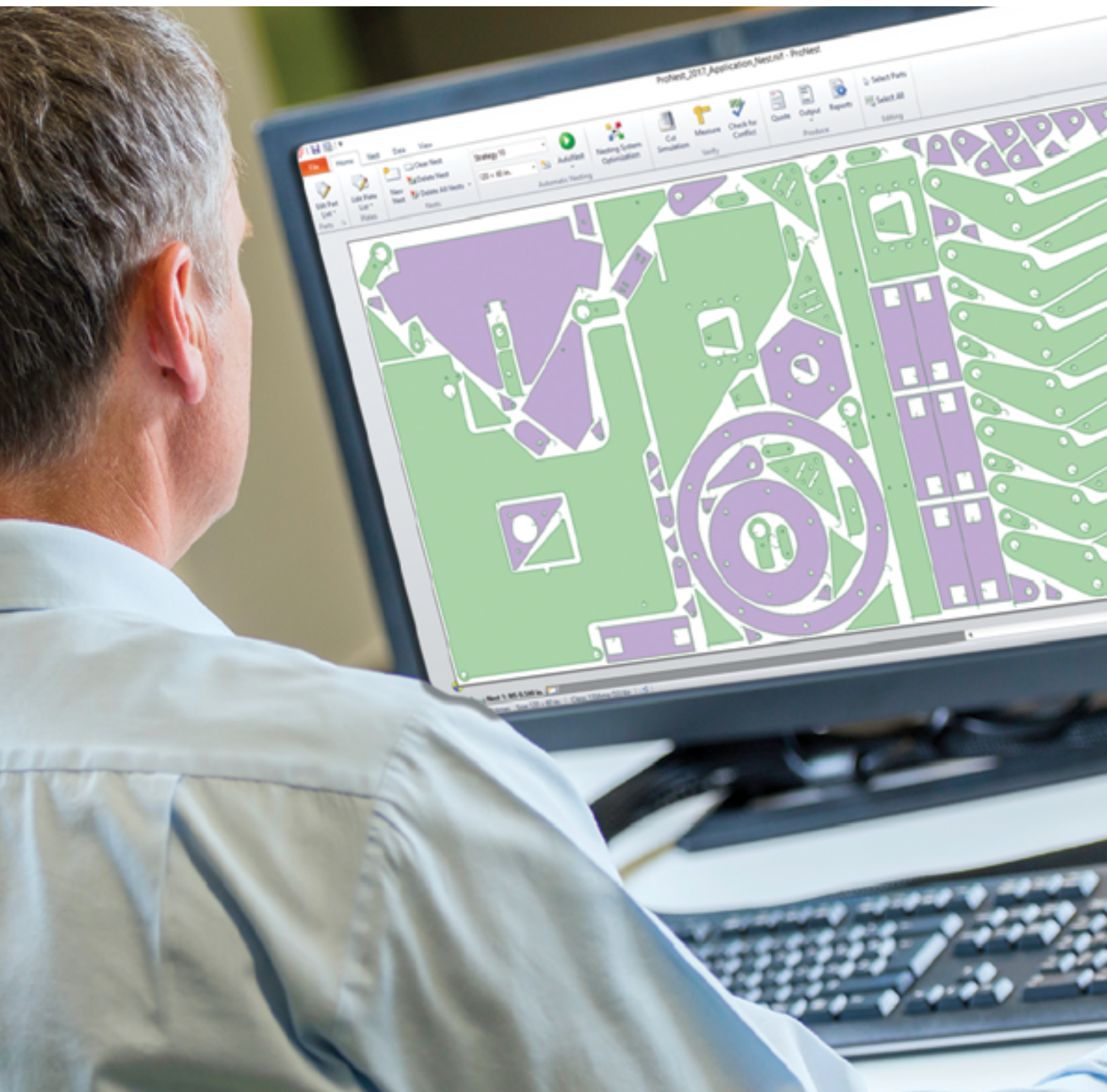


# CAD/CAM software family

Nesting, tube and pipe, sheet metal layout





# Contents

- 4 The Hypertherm® CAD/CAM difference
- 5 Accomplish more with ProNest®
- 8 The CAD/CAM software family
- 12 Rotary Tube Pro™
- 13 Design2Fab®
- 15 50 years of Shaping Possibility







## The Hypertherm CAD/CAM difference

Spend more time cutting and less time programming. Easy-to-use Hypertherm® CAD/CAM software for nesting, tube and pipe, and sheet metal layout can help you achieve greater automation, efficiency, and profitability.

Nearly 50 years of cutting experience has gone into our product development, and Hypertherm CAD/CAM software contains more built-in process expertise than any other brand.

ProNest®, our advanced CAD/CAM nesting software, automatically embeds this cut process expertise into the numeric code. Whether it's material type, thickness, or grade, ProNest is drawing on years of research and development to deliver the optimal adjustments including leads, separations, kerf, and feedrate. ProNest is also the only software with full support for Hypertherm SureCut™ technologies like True Hole®, and Rapid part®, which are delivered automatically without operator intervention, and True Bevel™ which greatly reduces bevel set up time.

Rotary Tube Pro™ provides a complete design and cut solution for tube and pipe parts with no 3D CAD experience required. And Design2Fab® provides a simple, yet powerful interface for sheet metal layout, HVAC, and other applications.

# Accomplish more with ProNest

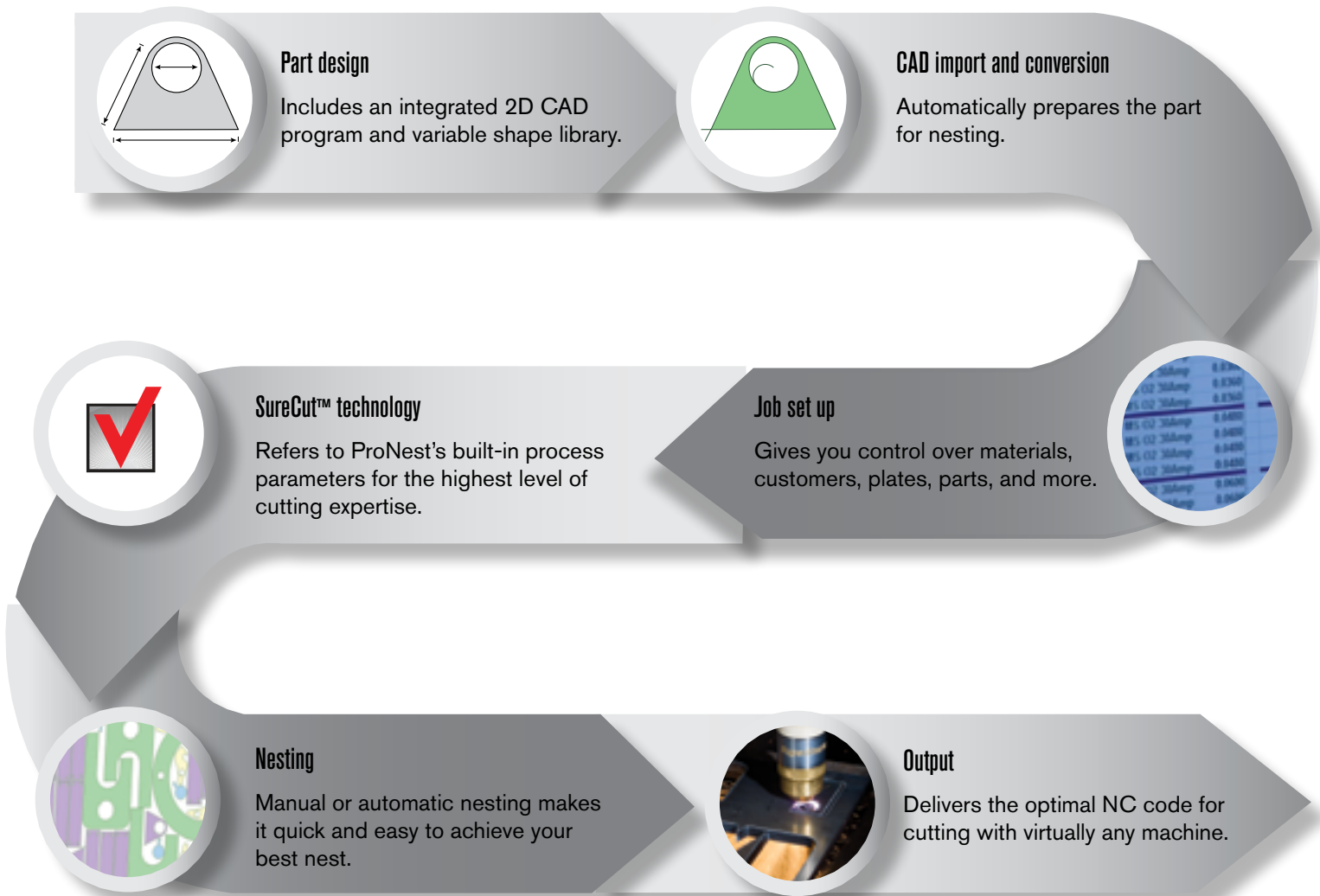
ProNest® is an industry leading CAD/CAM nesting software designed for advanced mechanized cutting. It provides a single solution for all of your profile cutting needs, including plasma, laser, waterjet, and oxyfuel.

ProNest offers all of the standard features you'll need to complete your jobs, plus optional modules for more advanced functionality.

Users agree this powerful software is surprisingly easy to learn and use. Your team will be up and running faster, and completing jobs more quickly.



## ProNest workflow ... customizable to meet your needs



# Are you maximizing your results?

ProNest® helps fabricators, manufacturers, and metal service centers achieve better results. Here are some of the ways ProNest can impact your business.

## Single software solution

“ProNest allows me to program eight different machines which has more than doubled our programming productivity.”

– Olympic Steel Inc.

## Faster programming

“Jobs that used to take 8 hours to program now take 5 to 10 minutes with ProNest.”

– Creative Edge Master Shop

## Increased material utilization

“With ProNest we’ve increased material utilization by 5%, which translates to \$50,000 annually.”

– Construction Products Inc.

## Better part quality

“True Hole® improves the look and quality of our products, and ProNest makes it easy.”

– T&J Manufacturing



# Applications supported

Regardless of which cut process, application, machine format, brand, or model you're using, ProNest® has the solution for you.

## Plasma



## Laser



## Waterjet



## Oxyfuel



## Bevel



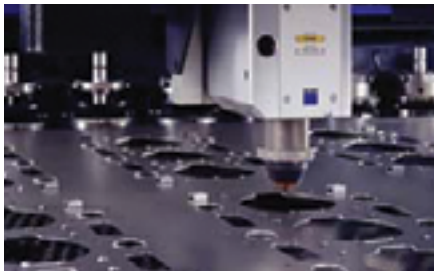
## Drill



## Plate



## Reposition



## Rotary pipe / tube



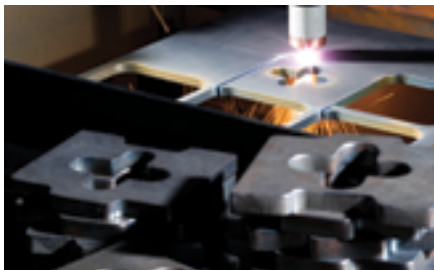
## ✓ SureCut™

ProNest is the only software that offers full support for Hypertherm SureCut™ technology, including:

## True Hole®



## Rapid Part™



## True Bevel™





# The CAD/CAM software family

Hypertherm® offers several CAD/CAM software products designed to drive your machines and improve your business productivity and profitability.



## ProNest® 2017

Nesting software for advanced mechanized cutting in enterprise and production environments.



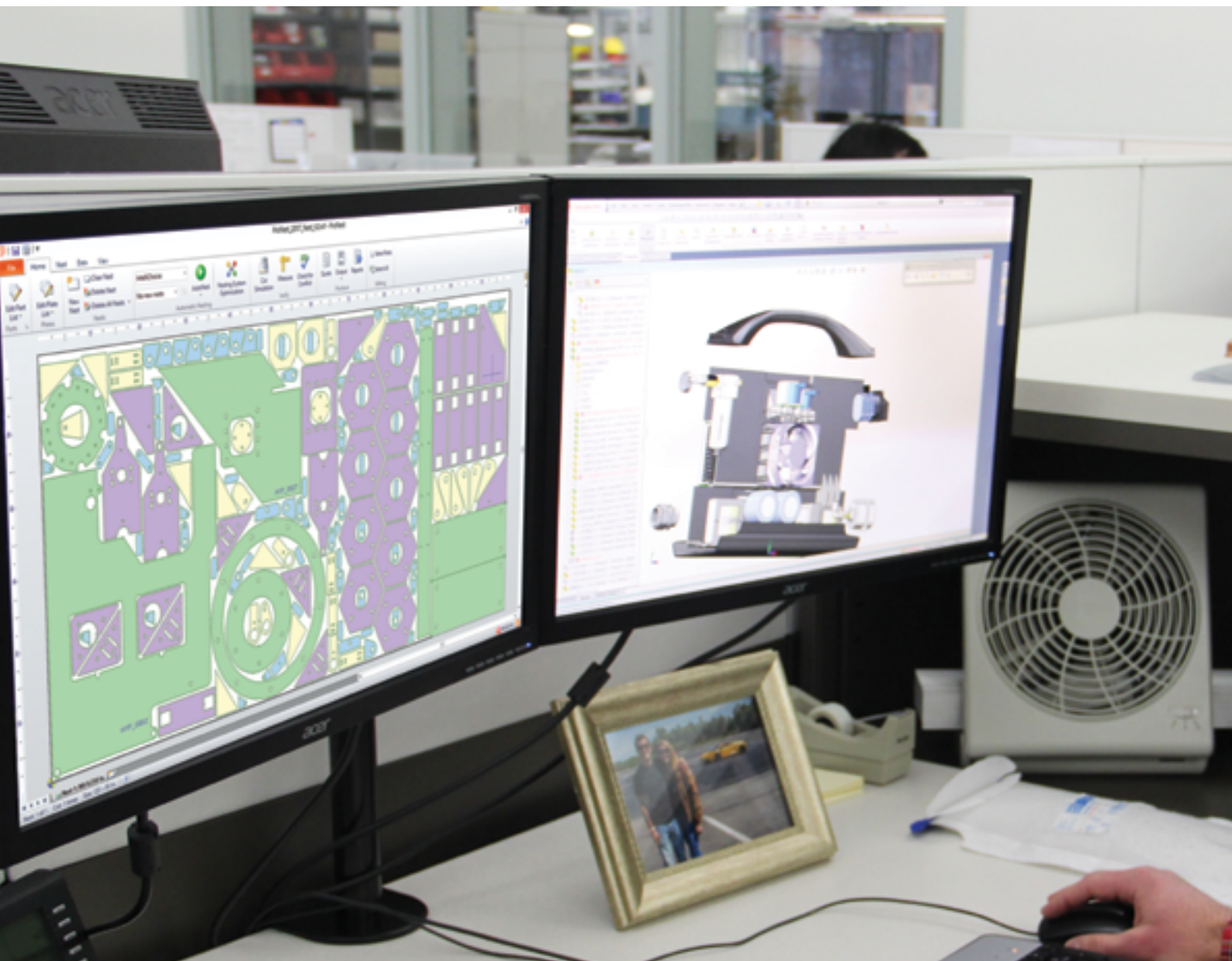
## ProNest® 2017 LT

Nesting software for light industrial mechanized cutting in production environments.



## ProNest® 2017 LTS

Nesting software for light industrial mechanized cutting in job shop environments.







### Rotary Tube Pro™

Pipe and tube cutting software for stand-alone tube cutting machines or cutting table add-ons.



### Design2Fab®

Sheet metal layout software for HVAC, duct work, mechanical, kitchen, industrial, roofing, and more.



### World class support

ProNest®, Rotary Tube Pro™, and Design2Fab® are backed by Hypertherm's global network of professionals, meaning you will always have access to the service and support you need. Our team has decades of experience in CAD/CAM software, plus many years applications experience working in various cutting industries.

# Your cutting and fabricating ecosystem



ProNest® not only drives your machines, it is also a key component of your entire cutting and fabricating ecosystem, with everything from quoting, to part design, to reporting, and managing inventory. ProNest also connects to ERP/MRP for real time data exchange.

# ProNest® product comparison summary

The following guide illustrates the basic differences between levels. For more detailed feature information, please visit [www.hypertherm.com/CAM](http://www.hypertherm.com/CAM).

## Key features legend

● Advanced    ◐ Intermediate    ○ Basic

	ProNest® 2017	ProNest® 2017 LT	ProNest® 2017 LTS
<b>Machine support</b>			
All major brands	●	●	●
<b>Cut process support</b>			
Plasma – conventional air / oxygen (ex. Powermax®, MAXPRO®)	●	●	●
Plasma – high definition / high current density (ex. HyPerformance®)	●		
Laser – fiber (ex. HyIntensity™) CO <sub>2</sub> , direct diode	●		
Waterjet – (ex. HyPrecision™)	●		
Oxyfuel	●	●	●
<b>Standard features</b>			
Part design	●	●	●
CAD import	●	●	●
Manual nesting	●	◐	○
Reporting	●	◐	○
Costing	●	◐	
Quoting	●		
A single job can contain sheets for different material types, thicknesses, and classes	●		
<b>SureCut™ technology</b>			
True Hole® technology capable*	●		
Rapid Part™ technology capable*	●		
True Bevel™ technology capable*	●		
Advanced process support and job set up on the CNC*	●		
<b>Optional module highlights</b>			
Automatic Nesting	●	◐	○
Productivity modules	●	◐	
Enterprise modules (including ERP/MRP integration)	●		
3D CAD modules	●		

\*Certain hardware and software requirements may apply.



# Rotary Tube Pro

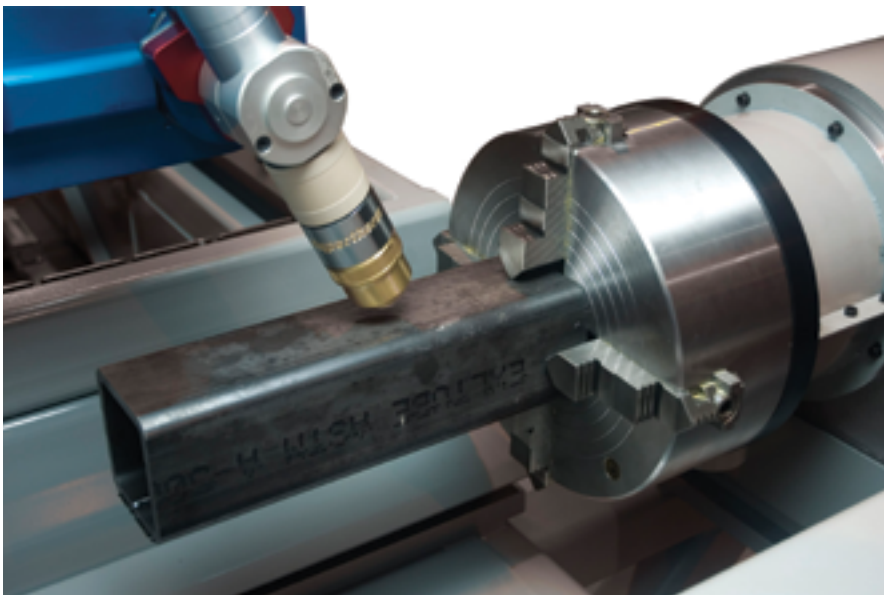
An easier way to design and cut tubes

Rotary Tube Pro™ offers a complete design and cut solution for tube and pipe parts with no 3D CAD experience required. Tubes and branches are easily defined within the software interface using standard parameters. Side-wall cut outs can be added from CAD, or from a list of pre-defined shapes.

Rotary Tube Pro supports virtually all brands of tube cutting machine, including stand-alone units and cutting table add-ons. The software supports perpendicular cutting as a standard feature and bevel cutting as an optional module.

## Standard feature highlights:

- Machine support for all major brands
- Cut process support for plasma, laser, waterjet, and oxyfuel
- Part creation and development
- SureCut™ technology capable including True Hole®
- Reporting with detailed job information
- Output with advanced post-processor
- Bevel cutting option



# Design2Fab

Sheet metal layout made fast and efficient

Design2Fab® is a stand alone Hypertherm® application for those creating HVAC duct, mechanical, kitchen, industrial, roofing or specialty fitting layouts. Engineered to dramatically reduce the time it takes to develop and lay out flat patterns, Design2Fab provides you with the ability to create complex custom fitting layouts in minutes, rather than hours.



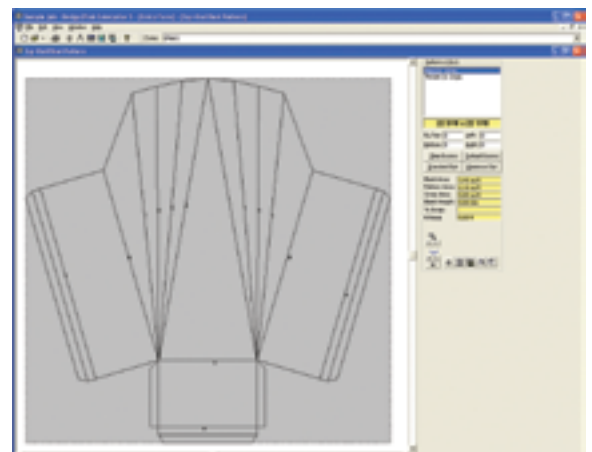
## Manual layout

Simply enter the fitting's dimensions and get a complete set of layout points, including blank and pattern measurements.

You will be able to output and print plot files (HPGL) for manual cutting or output a DXF to a CNC cutting machine. DXF files can also be exported to ProNest® prior to cutting, allowing for optimal material utilization for jobs with multiple parts.

## Estimating

Design2Fab accurately computes costing for the entire job including material, labor, fabrication, installation, and accessory costs (dampers, diffusers, fans, hangers, insulation, etc.) and your company's labor rates. You can also apply the desired markup, allowing you to confidently bid each job







# 50 years of Shaping Possibility

With the right tools and a relentless focus on innovation, partnership and community, we believe anything is possible.

At Hypertherm®, we give shape to our customers' vision with the world's leading industrial cutting solutions. Every day we help individuals and companies around the world envision better, smarter and more efficient ways to produce the products that shape our world. So whether you're cutting precision parts in North America, constructing a pipeline in Norway, fabricating agricultural machinery in Brazil, gouging out welds in the mines of South Africa, or building a skyscraper in China, you can count on Hypertherm to help you not just cut parts but achieve your vision.

## 100% employee ownership matters

At Hypertherm, we aren't just employees: we're all owners. Ownership is a powerful motivator that ensures our customers are our top priority. As owners, we make sure every product is built to the highest quality and that our service is second to none. And we build long-term relationships that deliver value for us, our partners and our customers.

## Shaping what's possible the world over

Hypertherm is a key partner for your fabrication needs and has built a global organization focused on providing high-performance cutting solutions.

## Key elements of the Hypertherm formula include:

- Dedicated Associates focused on customer-centered product design and support
- Local sales and service
- Broad application experience and proven results
- Sustainable and ethical business practices benefit our customers and communities

**HELPING YOU  
SHAPE THE WORLD.**



PLASMA | LASER | WATERJET | AUTOMATION | SOFTWARE | CONSUMABLES

Request a free trial at: [www.hypertherm.com/CAM](http://www.hypertherm.com/CAM)

Hypertherm, ProNest, SureCut, True Hole, Rapid Part, True Bevel, Rotary Tube Pro, Design2Fab, Powermax, MAXPRO, HyPerformance, HyIntensity, and HyPrecision are trademarks of Hypertherm Inc. and may be registered in the United States and/or other countries.

One of Hypertherm's long-standing core values is a focus on minimizing our impact on the environment. Doing so is critical to our, and our customers' success. We are always striving to become better environmental stewards; it is a process we care deeply about.

© 5/2016 Hypertherm Inc. Revision 0  
89697D